

## MEMORANDUM

DATE: May 14, 2018

FOR: Board of Trustees, Rockland Fire Protection District

FROM: Brian O'Connor, John Kelly and John Motylinski, Ottosen Britz Kelly Cooper Gilbert & DiNolfo, Ltd.

SUBJ: Assessment of Service Proposal presented by the Village of Lake Bluff and combined Service Proposal presented by the Village of Libertyville-City of Lake Forest

Ref: Minutes of the Special Board Meeting held May 8, 2018, with attachments  
Minutes of the Special Board meeting held May 10, 2018, with attachments

The Board asked for our thorough and critical assessment of the service proposals noted above. Service proposal details are highlighted in the reference meeting minutes, including attached materials.

### Authority and Background

The District's Board has statutory authority to consider, and permissibly enter into, agreements for provision of emergency fire and ambulance service for the District.

- The District is a unit of local government organized and operating pursuant to Illinois law, including but not limited to the Illinois Fire Protection District Act ("Act," 70 ILCS 705/0.01 *et seq.*).
- The District's Board of Trustees ("Board") serves as the corporate authority for the District (70 ILCS 705/6(a)).
- The Board has the power to pass all necessary ordinances, and rules and regulations for the proper management and conduct of the business of the District's Board (70 ILCS 705/6(i)).
- The Board may enter into agreements on behalf of the District for provisions of fire prevention/suppression, emergency ambulance, technical and special rescue services to the District [70 ILCS 705/11a, 22, 25 and 26].

The District's Board currently provides emergency ambulance service to and for the District by agreement with the Village of Libertyville, and formerly with the City of Lake Forest.

Similarly, the District's department currently provides fire prevention/suppression, technical and special rescue services to the District, supplemented as needed by separate agreement with assets of neighboring departments including but not limited to those of the Village of Lake Bluff, Village of Libertyville, City of Lake Forest, and City of North Chicago.

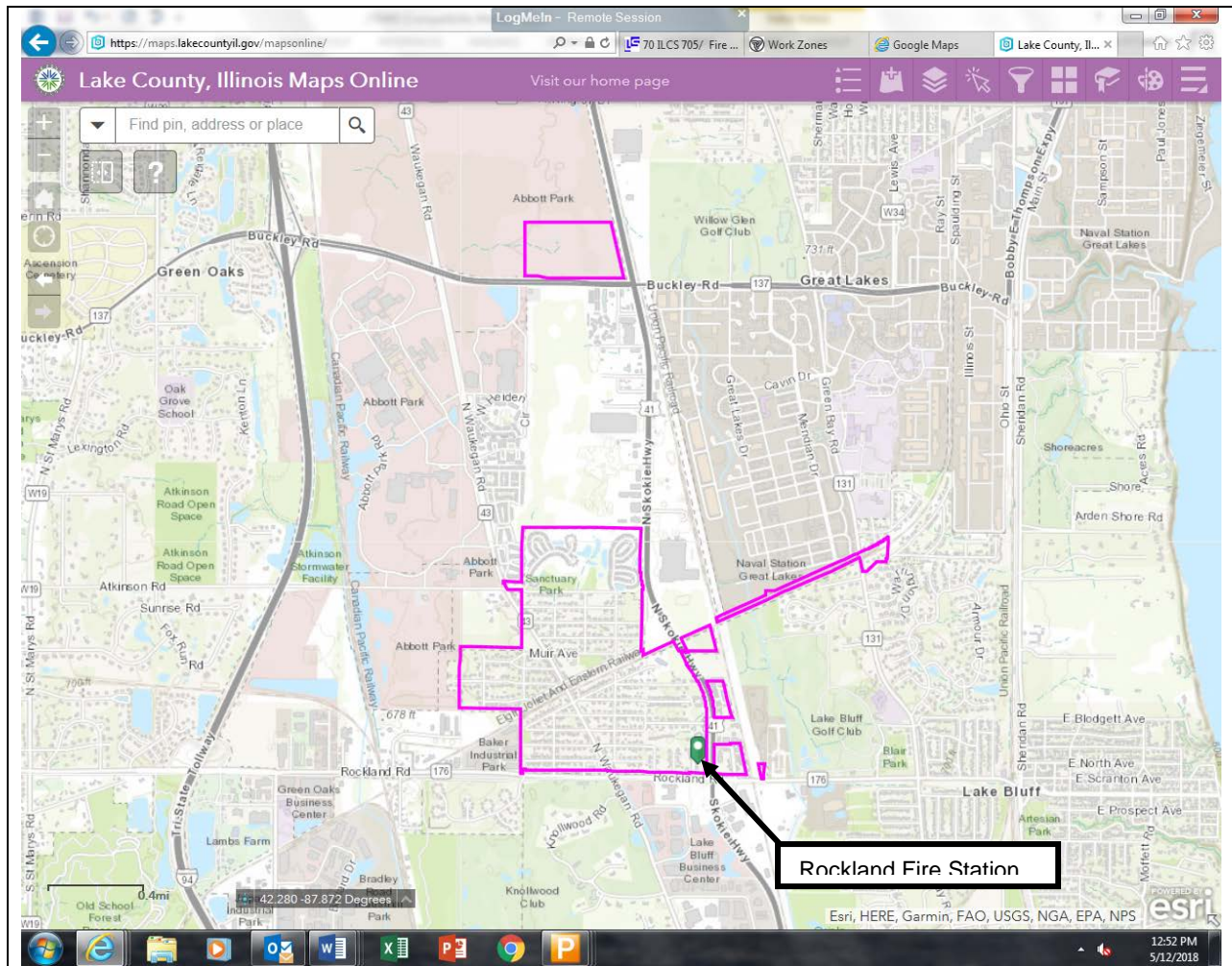
### IDOT and Road Access

At some undetermined point in the future, the Ill. Dept. of Transportation ("IDOT") plans to revise the intersection of U.S. Route 41 and Ill. Route 176. Current IDOT information identifies the project purpose as being to address restriction on vehicular access between the roads. IDOT information identifies the timeframe for the project as being "4/15/2013 to 12/31/2050." IDOT

# PRIVILEGED AND CONFIDENTIAL – LEGAL ASSESSMENT

officials working on the project have previously advised the District Board and officers that the scope of the project would involve re-engineering of the intersection with a related taking of necessary land which would include all of the North Skokie Highway right-of-way (sole access road to/from the District's fire station) and approximately half of the apron between the current station and North Skokie Highway. When, and if, this project comes to fruition, this taking of roadway access will make use of the current fire station untenable: the District will require a new, functional fire station prior to the onset of roadway demolition work, OR if not possible or impractical then the District will need to enter into agreements for the provision of fire prevention/suppression, emergency ambulance, technical and special rescue services to the District.

## Current District boundaries.



## Proposal Summary/Highlights

Details of the proposals, in their current, incomplete form, are included as part of the meeting minutes referred to above.

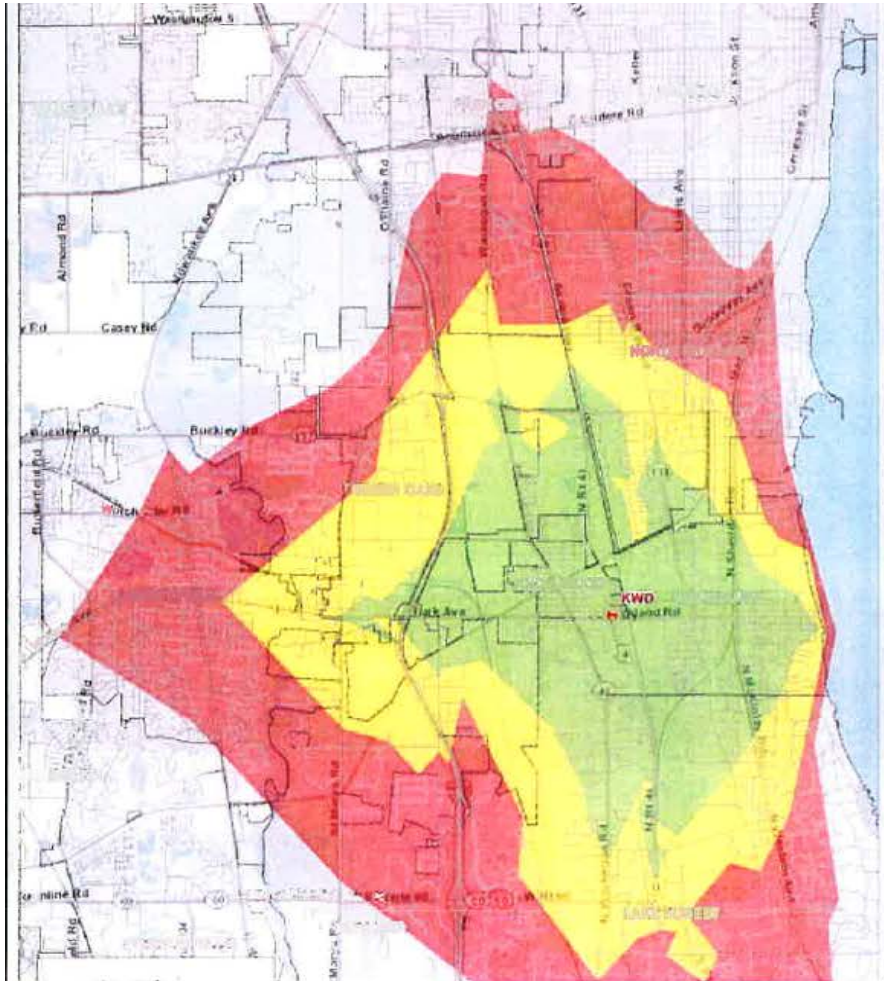
## Options

The District and Board have three options to consider.

## PRIVILEGED AND CONFIDENTIAL – LEGAL ASSESSMENT

### Option 1, Maintain the status quo.

- Continue to provide fire prevention/suppression, technical and special rescue services to the District, supplemented as needed by separate agreement with assets of neighboring departments.
- Continue to provide initial emergency medical treatment services with the District's ALS-engine with emergency ambulance treatment and transport service to and for the District by agreement with a neighboring department.
- Continue to provide services using two to four paid-on-premises (POP) members with 24/7 coverage at the District fire station, supplemented by paid-on-call (POC) members as required. The District would continue to provide service with no full-time members.
- The current Rockland fire station provides optimal response time coverage for the District.



Response time legend: green = 0-5 minutes, yellow = 5-7 minutes, red = 7-10 minutes.

#### *Advantages Option 1.*

- Maintains optimal response time coverage for the District.
- Facilitates direct community involvement with and interest in the District and activities.
- Enables responsiveness to District residents.
- Continue emergency dispatch procedures now in place.
- Continue emergency ambulance transport processes now in place.

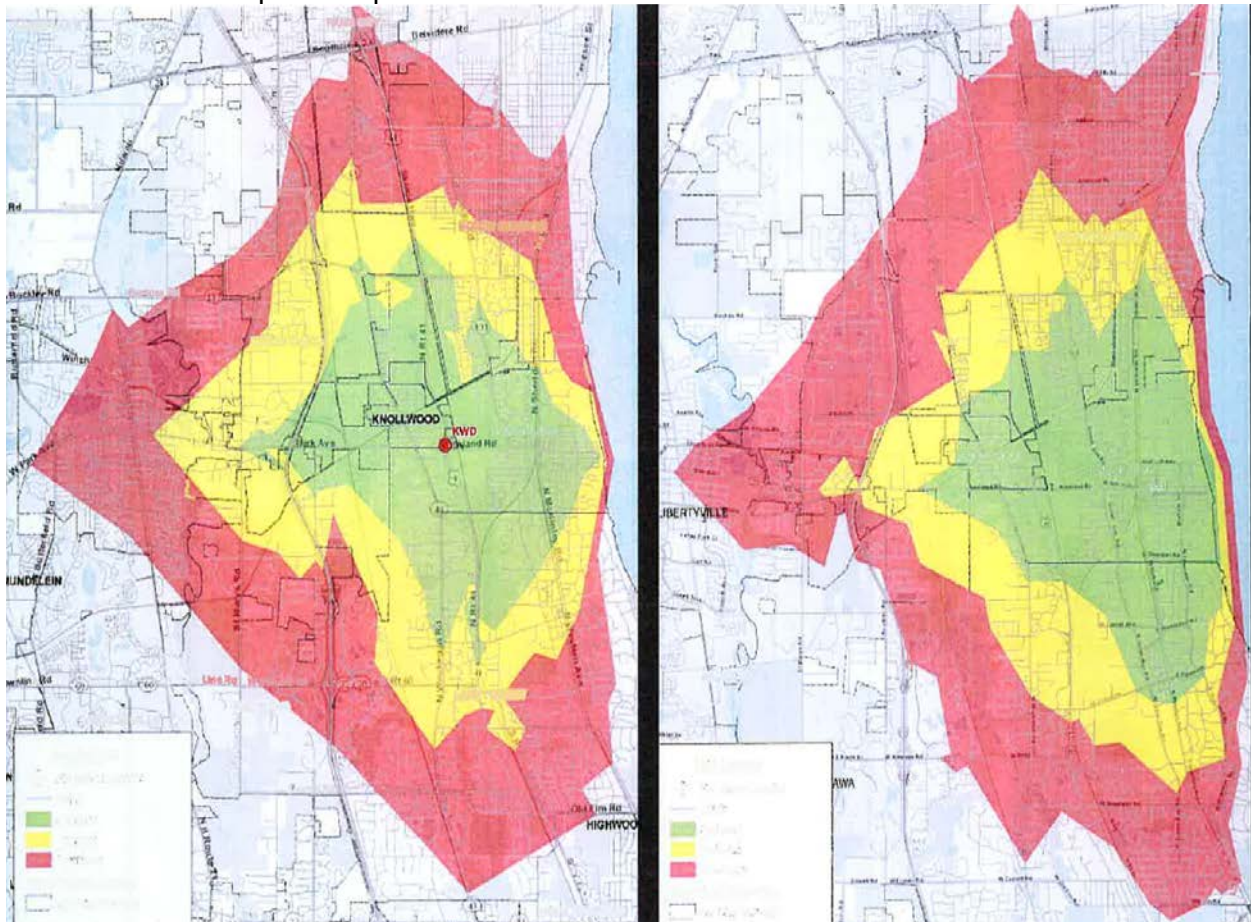
## PRIVILEGED AND CONFIDENTIAL – LEGAL ASSESSMENT

### *Disadvantages Option 1.*

- Not the most cost effective/efficient.
- May not be fiscally viable in the long-term: increasing service and administrative costs, equipment and facility costs, etc. with limited (finite) revenue stream).
- Requires continued fiscal investment in stations, equipment, staffing, training, etc.
- Relies on availability of qualified POP/POC firefighter/EMT staffing.
- Relies on availability of emergency ambulance transport service provider, at an affordable price.
- Undermined by IDOT US-41/III. Rt. 176 intersection reconstruction.

### **Option 2. Agree to a joint/combined provision of services with the Village of Lake Bluff.**

- Each department retains its one operational fire station.
- Each department retains fire prevention/suppression and technical/special rescue equipment and as needed.
- Continue to provide initial emergency medical treatment services with the Rockland's ALS-engine and 24/7 POP staff. Enter into joint adventure to procure and provide emergency ambulance transport service to and for both service areas.
- Station 24/7 POP staffing dynamically assigned, rotating between Rockland and Lake Bluff stations as needs are forecast or actually develop.
- Combine/expand response areas.



## PRIVILEGED AND CONFIDENTIAL – LEGAL ASSESSMENT

### *Advantages Option 2.*

- Maintains optimal response time coverage for the District as long as Rockland's station is staffed; back-up from Lake Bluff station possible but question of timelines.
- Enable continued community involvement with and interest in the District and activities.
- Continues responsiveness to District residents.
- Potential mutual savings on equipment efficiencies.
- Potential joint savings on emergency ambulance transport service availability/costs.
- Potential recovery of additional revenue from treatment and transport fees.

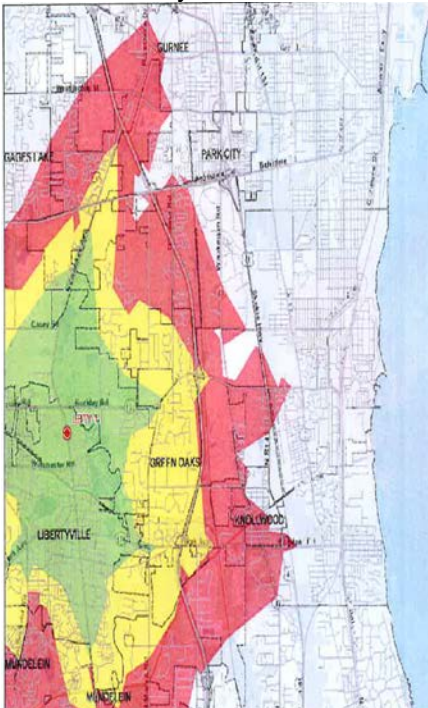
### *Disadvantages Option 2.*

- Dilutes response effort over greater area of responsibility.
- Dilutes community impact with greater area of responsibility.
- Costs and time to procure/equip/license ambulance.
- Costs for increased POP staffing for coverage of greater area of responsibility.
- Dynamic staffing assignments may be analogous to continual "change of quarters."
- May not be fiscally viable in the long-term: increasing service and administrative costs, equipment and facility costs, etc. with limited (finite) revenue stream).
- Requires fiscal committed to maintaining 2 fire stations.
- Relies on availability of qualified POP/POC firefighter/EMT staffing.
- Undermined by IDOT US-41/III. Rt. 176 intersection reconstruction.

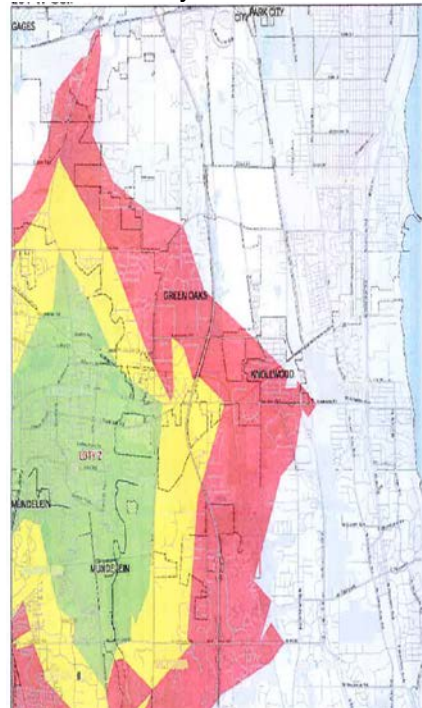
### **Option 3. Contract for services with the Village of Libertyville and City of Lake Forest.**

- All fire prevention/suppression, emergency medical treatment and ambulance transport, technical and special rescue services to the District provided by either Libertyville or Lake Forest fire departments.
- No need for Rockland's fire station, perhaps some or Rockland's equipment, perhaps some of Rockland's staffing.
- Response times vary.

Libertyville FD #1

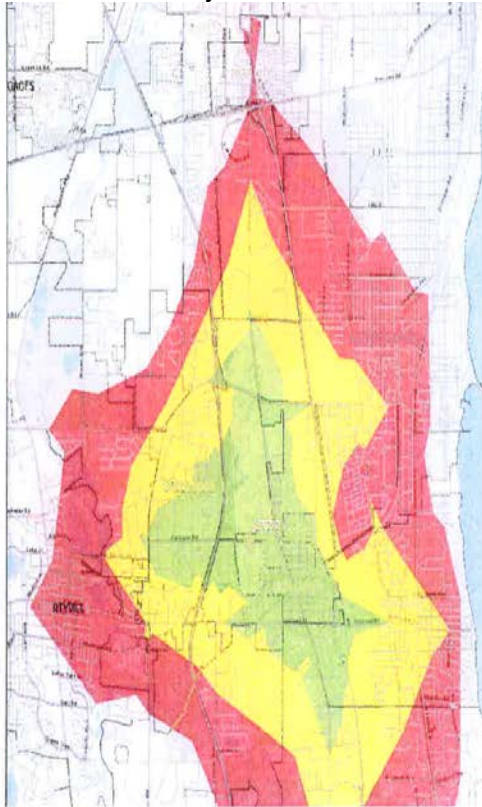


Libertyville FD #2

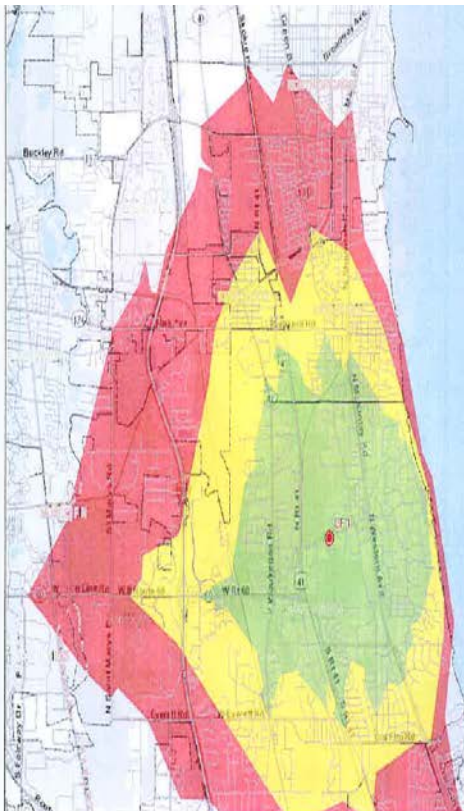


**PRIVILEGED AND CONFIDENTIAL – LEGAL ASSESSMENT**

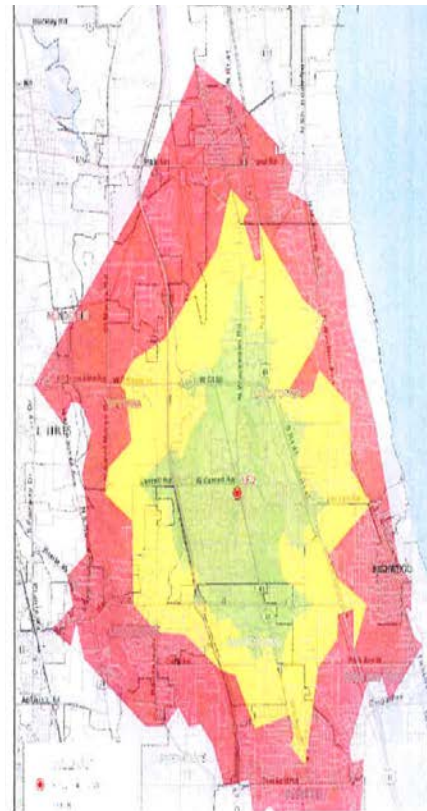
Libertyville FD #3



Lake Forest FD #1



Lake Forest FD #2



Response time legend: same.

## PRIVILEGED AND CONFIDENTIAL – LEGAL ASSESSMENT

### *Advantages Option 3.*

- Maintains optimal response time coverage for the District as long as Libertyville FD #3 station is staffed.
- Fiscal savings on facility, equipment and staffing efficiencies.
- Avoids issues related to IDOT US-41/III. Rt. 176 intersection reconstruction.
- Does not rely on availability of qualified POP/POC firefighter/EMT staffing.

### *Disadvantages Option 3.*

- Questionable timeliness of back-up responsive from Libertyville #1 and #2 and Lake Forest #1 and #2.
- Dilutes response effort over greater area of responsibility.
- Diminishes community responsiveness on and impact over provision of services.
- May not be fiscally viable in the long-term: increasing service and administrative costs.
- Stated costs of proposal unchanged from earlier projections which District deemed not fiscally sustainable.

## Assessment

**Option 1**, or a variation thereof, perhaps offers the most optimal option for Board consideration.

**Option 3.** Appears Option 3 is the least optimal option for the District.

**Cost.** The proposal's service cost was and remains questionable, although subject to negotiation. Savings from facility/equipment/staff efficiencies or reductions tend to be short-live and typically lower than hoped for, leaving a potential long-term financial deficit.

**Response.** The service response to and in the District is maintained only if Libertyville FD Station #3 provides service. Timely back-up might come from Lake Bluff, while other Libertyville or Lake Forest back-up response is nowhere near as timely.

**Sustainability.** While long-term affordability is not certain, Option 3 does address the potential impact of IDOT US-41/III. Rt. 176 construction project.

**Option 2.** Better than Option 3, but still with considerations.

**Cost.** The proposal's costs for services increase, although related to procuring, outfitting and staffing an ambulance for emergency ambulance treatment, offset somewhat by potential recovery of resulting treatment and transport fees for those services. Costs also remain for maintenance of two fire stations.

**Response.** Good, if Rockland station is staffed; a little less so if response comes from Lake Bluff's station.

**Sustainability.** Long-term affordability is not certain but more likely than Option 3. Potentially undermined by impact of IDOT US-41/III. Rt. 176 construction project.

**Option 1.** Perhaps slightly better than or on par with Option 2; better than Option 3.

**Costs.** District continues its current revenue and cost structure. This is subject to availability of affordable ambulance transport services. [Rockland pays \$120,000 for services while Lake Bluff pays 2½ times that amount.] Perhaps investigate further the joint ambulance service envisioned in Option 2 while continuing to support current fire prevention/suppression, technical and special rescue services to the District. Also, long-term planning is needed for future District facility maintenance.

**Response.** Optimal response to the District from Rockland's station. Reasonable auto-aid/mutual aid back-up from Lake Bluff and/or Libertyville FD #3 stations.

**Sustainability.** Long-term affordability is not certain as concerns on the District's long-term taxpayer funding still exist. Potentially undermined by impact of IDOT US-41/III. Rt. 176 construction project.